

## QUICK INSTALLATION

### Wireless I In Broadband Storage Router

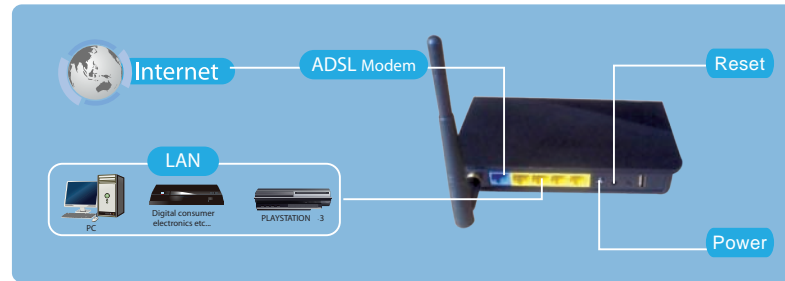


#### Package Content

- Wireless I In Router
- User Manual CD
- Network Cable
- Power Adapter
- QIG

## Installation

- A.** Unpack router box and arrange like below.



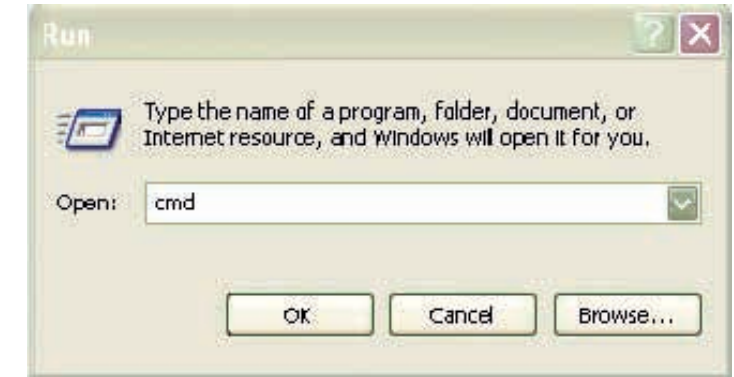
- B.** Default parameters.

Default Router IP	: 192.168.7.1
Default Username	: admin
Default Password	: password
Default WiFi SSID	: leo-150n-bt
Default WiFi SSID Password	: leo-150n-bt

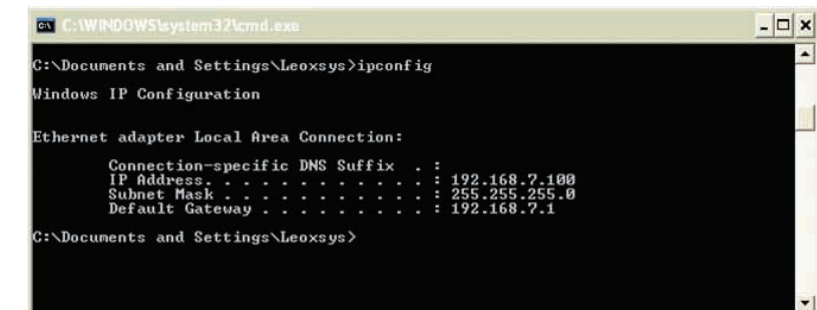
- C.** Go to browser and open the router with the given ip address **192.168.7.1** .The following home page will be displayed



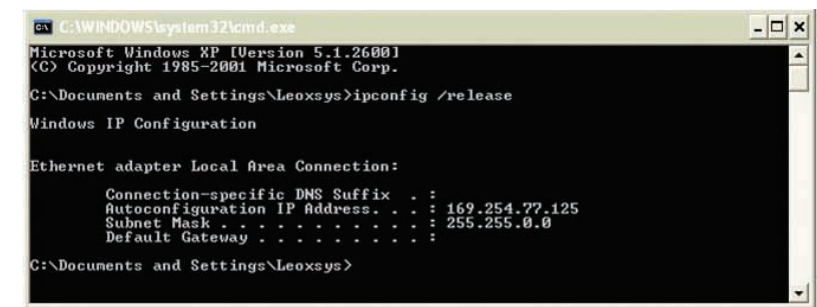
- D.** If you are not able to get the home page then go to **start menu** and select **run** , the following window appears.Type **cmd** or **command** and **enter**.



- E.** The command prompt appears. Check the ip address , subnet mask and default gateway using **ipconfig**. **The Default Gateway should be 192.168.7.1**



- F.** If you are not able to get above parameters, release the connection using **ipconfig /release**.



G. After releasing the connection, use **ipconfig /renew** to get router as default gateway. Now go to the browser and open the home page.

```

C:\WINDOWS\system32\cmd.exe
C:\Documents and Settings\Leoxsys>ipconfig /renew
Windows IP Configuration

Ethernet adapter Local Area Connection:

    Connection-specific DNS Suffix  . : 
    IP Address . . . . . : 192.168.7.100
    Subnet Mask . . . . . : 255.255.255.0
    Default Gateway . . . . . : 192.168.7.1

C:\Documents and Settings\Leoxsys>
  
```

H. When you open it, it will ask for the username and password then enter the following  
 Username: **admin** Password: **password**

I. This takes you to the home page.

J. Please select Setup wizard, the following will appear.  
 Please follow step by step to finish router's initial installation.

K.

L.

M.

N.

## Congratulations setup is completed



NOTE: For more advanced settings and security options, refer to the User Guide on the CD-ROM.

For additional information or troubleshooting help, refer to User Guide on the CD-ROM. Additional support is also available by phone or online.

**12-Hour Technical Support**  
 (9 AM - 9 PM)  
 +91 97396 00431

**RMA (Return Merchandise Authorization)**  
<http://www.leoxsys.com/warranty>

**Website**  
<http://www.leoxsys.com>

**FTP Site**  
<ftp://ftp.leoxsys.com>

**Support**  
<http://www.leoxsys.com/support.html>

**Sales Information**  
 +91-80-40903460

**Leoxsys Networks Pvt. Ltd.**  
 #2213, Opp. ISRO, 80 Feet Road,  
 HAL 3rd Stage, Bangalore-560008, India.

